

Calgary Flames Scouting

Current Depth Chart

Left Wing

Alex Tanguay
Marcus Nilson
Kristian Huselius
Brandon Prust

Center

Daymond Langkow
Jamie Lundmark
Matthew Lombardi
Byron Ritchie

Right Wing

Jarome Iginla
Tony Amonte
Chuck Kobasew
Darren McCarty

Other Combinations

Huselius – Lundmark – Kobasew
Nilson – Ritchie – Amonte
Huselius – Langkow – Iginla
Tanguay – Lombardi – Kobasew
Prust – Lombardi – McCarty
Nilson – Langkow – Iginla
Prust – Langkow - Iginla

Note: Iginla and Langkow will line up with every LW on the roster. Flames work the top three lines in a repeating system (L1, L2, L1, L2, L3) if there is a consistent flow between penalties. L4 receives 90 seconds of ice time together on average.

Defensemen Pairings

Dion Phaneuf Roman Hamrlik
Robyn Regehr Rhett Warrener
Andrew Ference Andrei Zyuzin

Other Combinations

Ference – Warrener
Hamrlik – Ference
Phaneuf – Regehr
Zyuzin – Regehr

Note: Standard rotation of top three pairings, very little variation until it becomes necessary (ie. penalty, treatment session). Would like to match Phaneuf with Regehr on a more regular basis but currently only use them in a defensive set up.

Goaltender

Miikka Kiprusoff
Jamie McLennan

Note: The job is Kiprusoff's to have until he doesn't want it anymore. No debate in net.

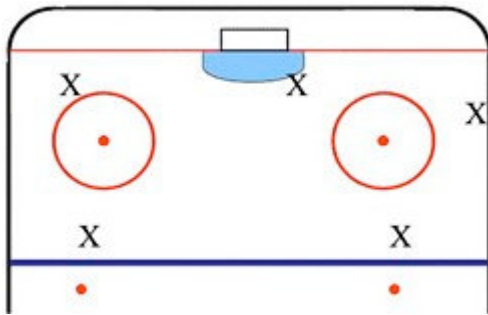
Power Play

PP1 - Huselius – Langkow – Iginla – Phaneuf – Hamrlik
PP2 - Tanguay – Langkow – Iginla – Ference – Regehr

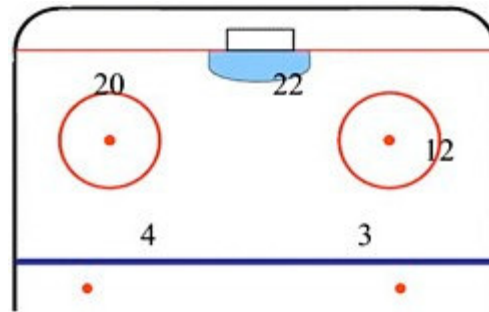
PP3 - Tanguay – Lombardi – Kobasew – Phaneuf – Hamrik

Note: Also use some other variations to get Amonte, Lundmark and Nilson going when facing a penalty filled period. Iginla lives on the ice during a power play and will set up on the right hand side for the one timer.

Flames Power Play Set Up:



Flames Top Unit:



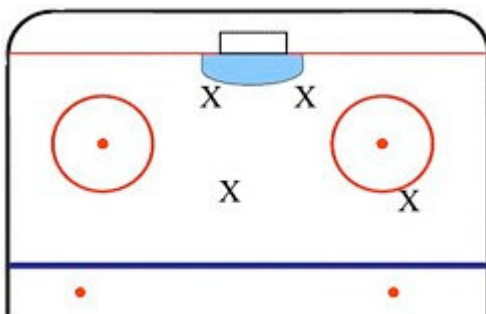
Short Handed

SH1 – Amonte – Lombardi – Regehr – Warrener

SH2 – Langkow – Nilson – Hamrik – Ference

Note: The Flames use a rather simple high box set up on the penalty kill. Using their speed up front they do look to the short handed goal but are more conservative than some speed based teams. They will also play Iginla on the penalty kill when the game is on the line lined up with either Langkow or Lombardi.

Flames Short Handed Set Up:
(Puck to Right Hand Side)



Flames Top Unit:

